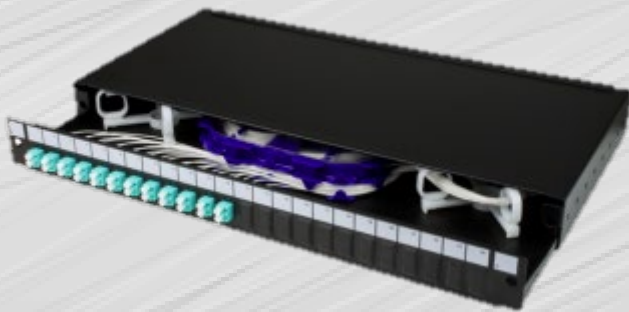


**Fiber Management**

# Sliding Patch Panel

# (SC Simplex 24)

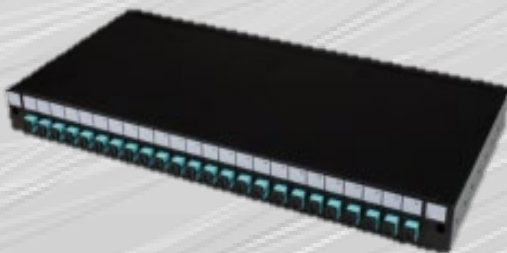


This sliding patch panel presents up to 48 fibres as SC or LC connections.

The front of the panel has exchangeable front frames for use with any fibre optic connector type. The tray slides out to allow easy access while preserving the bend radius of connecting patch cables. When fully extended the panel pivots down 45 degrees at a convenient working angle.

Allows direct connection of pre-terminated cables or 48 individual bare fibre splices. With adequate fibre storage for 0.9mm pigtailed

Available empty or loaded in any configuration and with any approved fibre type



## OVERVIEW

- Holds up to 48 fibres
- Precise dimensions and craftsmanship
- Easy to use opening/closing fasteners
- Removable and exchangeable front frame
- Recessable adapters with inner front frame
- Adjustable brackets for a fully recessed panel
- 180° or 45° open working angle for easy access
- Individually labelled ports
- 4 cables entries and knock-out plate
- Built-in strength member tie positions
- Multi adapter options available within 24 ports
- Available loaded with adapters, pigtails and more



## Fiber Management

# Sliding Patch Panel

# (SC Simplex 24)

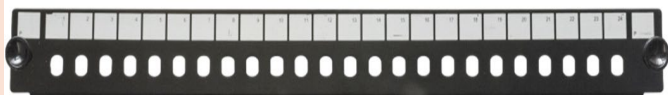
### Technical Specifications

<b>Adaptor Types</b>	SC (Simplex) LC (Duplex)
<b>U Size</b>	1U (44.4mm)
<b>Width</b>	482mm
<b>Depth</b>	205mm
<b>Net Weight (Unloaded)</b>	2.65kgs
<b>Packaged Weight (Unloaded)</b>	2.80kgs
<b>Packaged Dimensions</b>	450(w) * 55(h) * 260(d) mm
<b>IP Rating</b>	20
<b>Cable Entries</b>	2x 20mm, 2x 25mm
<b>Mounting Adjustment Range</b>	50mm
<b>Material</b>	1.2mm Cold Rolled Steel
<b>Material Coating</b>	Powder
<b>Colour</b>	RAL 9004
<b>Operating Temperature</b>	-40°C to +50°C
<b>Accordance</b>	TIA/EIA 568.C, ISO/IEC 11801, ENS50173, IEC60304, IEC61754, EN297-1
<b>Compliant</b>	RoHS, Reach/SVHC

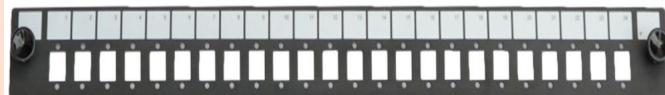
### Exchangeable Front Frames

Additional front frames are available separately and can be exchanged with any existing front frame on our universal chassis.

**FC/ST Simplex - 24 Port**



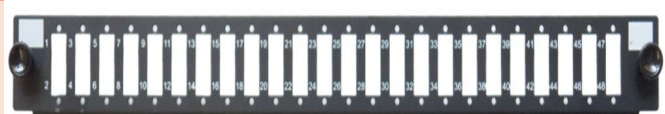
**SC/E2000 Simplex (LC Duplex) - 24 Port**



**SC Duplex (LC Quad) - 12 Port**



**SC Duplex (LC Quad) - 24 Port**



## Fiber Management

# Sliding Patch Panel

# (SC Simplex 24)

### Description

SC (LC) Duplex (Quad) Front Frame - 24 Port
SC (LC) Duplex (Quad) Recessable Frame - 24 Port
SC (LC) Duplex (Quad) Front Frame - 12 Port
SC (LC) Duplex (Quad) Recessable Frame - 12 Port
SC/E2000 (LC) Simplex (Duplex) Front Frame - 24 Port
SC/E2000 (LC) Simplex (Duplex) Recessable Frame - 24 Port
FC/ST Simplex Front Frame - 24 Port

### Ordering Information

Height	Adapter Type	Fibre Type	Panel Style	Config	Adapter Density
1U	FC	Unloaded	Sliding Patch Panel	Simplex	1-24 Ports
	ST	Singlemode Loaded			
		Multimode Loaded			
		Singlemode APC Loaded			

## Fiber Management

# Sliding Patch Panel

(SC Simplex 24)

### Available Loaded Patch Panel Configurations

Patch Panels are available with other accessories included.

#### SC SX

Sliding Patch Panel SC SX / LC DX SX 24 Ports Empty

Sliding Patch Panel SC SX / LC DX SX 24 Ports Empty with splice cassette

Sliding Patch Panel SC SX / LC DX SX 24 Ports Empty with fibre management

Sliding Patch Panel SC SX / LC DX SX 24 Ports Empty with splice cassette and fibre management

Sliding Patch Panel SC SX Loaded with adapters

Sliding Patch Panel SC SX Loaded with adapters and splice cassette

Sliding Patch Panel SC SX Loaded with adapters and fibre management

Sliding Patch Panel SC SX Loaded with adapters and splice cassette and fibre management

Sliding Patch Panel SC SX Loaded with adapters, pigtails, splice cassette and fibre management

#### LC DX

**Sliding Patch Panel LC DX Loaded with adapters**

**Sliding Patch Panel LC DX Loaded with adapters and splice cassette**

**Sliding Patch Panel LC DX Loaded with adapters and fibre management**

**Sliding Patch Panel LC DX Loaded with adapters and splice cassette and fibre management**

**Sliding Patch Panel ST SX Loaded with adapters, pigtails, splice cassette and fibre management**

For any queries, please contact Technoline Solutions team using the details below.