

## Fiber Management

# INDOOR TERMINAL BOX

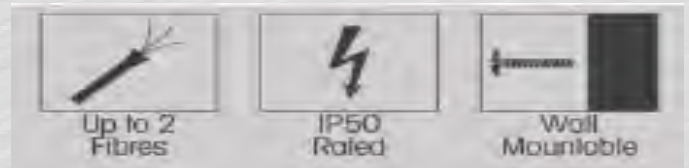
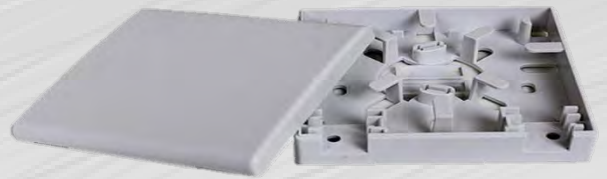
1

### PRODUCT SPECIFICATIONS

Fibre Optic Terminal Boxes are light and compact whilst maintaining ample fibre storage needs and minimum bend radius. Terminal Boxes can be wall mounted and have a variety of core capacities and adapter types available.

### APPLICATIONS

- Aerial
- Direct- Burial
- Wall & Terrace Mounting



### SPECIFICATIONS

Purpose	Wall & Terrace Mount
Capacity	2
Cable Entries	0 (knock-out plate at rear)
Dimensions	86x86x24mm
Weight	0.1kg
Lateral Pressure Resistance	--N
Material	ABS
Shock- Resistance	--N

### ENVIRONMENTAL SPECIFICATIONS

Operation (°C)	-40~+80
Installation (°C)	-40~+80

### FEATURES

### BENEFITS

Lightweight	Easy Operation
Knock-out rear plate	Connect/ Reconnect adaptors over 200 x
Connector for FC, SC, ST or LC	

### ORDERING INFORMATION

Model	Fiber type	Adaptor Type	Simplex/ Duplex
1	Unloaded	ST	Simplex
	Singlemode	SC	Duplex
	Multimode	FC	
	SM APC	LC	

For any queries, please contact Technoline Solutions team using the details below.