

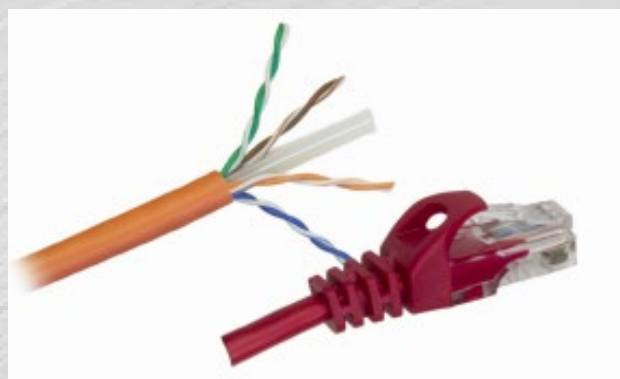
Copper structured cabling

Category 6 U/UTP Patch Cords

Unshielded Twisted Pair (UTP) Category 6 Patch Cord conforms to ANSI/TIA/EIA-568-B.2-1, ISO/IEC 11801 2nd edition (2002) and CENELEC EN50173 (2002) for Category 6/Class E.

It has been tested up to 250 MHz, and is designed for high speed protocols such as ATM 622 Mbps and Gigabit Ethernet 1000 Mbps applications.

The patch cord is comprised of flexible patch cable and is terminated with two modular plugs along with moulded snag-less boots.



Features & Benefits

- Snagless design prevents locking tabs breaking off
- 4 pairs twisted pair cable
- Provides enhanced EMC protection and improved alien crosstalk performance
- All cables meet or exceed the requirement proposed by TIA /EIA 568 B .2 ,ISO/IEC 11801 Category 6
- Pre-terminated with 8W plugs
- Available in variety of lengths and colours
- the cross frameworks are stripped to match corresponding colour pairs
- Backwards compatible with Category 5e

Application

POTS, T1&Tq fractional	52/155 Mbps ATM (ATM Forum)
ASDN basic & primary rate	100 BASE-T4 (Fast Ethernet)
4/16 Mbps Token Ring (IEEE802.5)	100 VG-Any LAN (IEEE802.12)
10 BASE-T (IEEE802.3)	100 BASE-T (Fast Ethernet)
100 Mbps TP-PMD	1Gbps Ethernet

Copper structured cabling

Category 6 U/UTP Patch Cords

Mechanical Characteristics

Cable	
Conductor Size (AWG)	24 stranded bare copper
Dielectric Material	PE
Diameter of Dielectric Core	7*0.2mm
External Diameter	5.8±0.2mm
Sheath Material	PVC or LSZH
Temperature Range	-20°C to +60°C
Plug	
Operating Life	750 Insertion Cycles
Contact Material	Phosphor Bronze
Contact Plating	60 micro-inch Gold
Housing Material	PC UL94V-0

Electrical Characteristics

Voltage	150V
Current	1.5A
Contact Resistance	Max 20mΩ
Insulation Resistance	500mΩ
Dielectric Withstanding Voltage	1000V RMS
Operating Temperature	-40°C to +85°C

Colouring

Pair 1	Pair 2	Pair 3	Pair 4
Blue Blue/White	Orange Orange/White	Green Green/White	Brown Brown/White

Ordering Information

Construction	Patch Cord	Length	Category	Colour	Jacket Material
UTP	Patch cord CPC	0,5m – 0,5	Category 6	Grey	PVC - PVC
		1m - 1		Red	
		2m - 2		Green	
		80m - 80		Blue	
				Yellow	
				Orange	
				White	
				Black	
				Purple	
				Pink	

For any queries, please contact Technoline Solutions team using the details below.